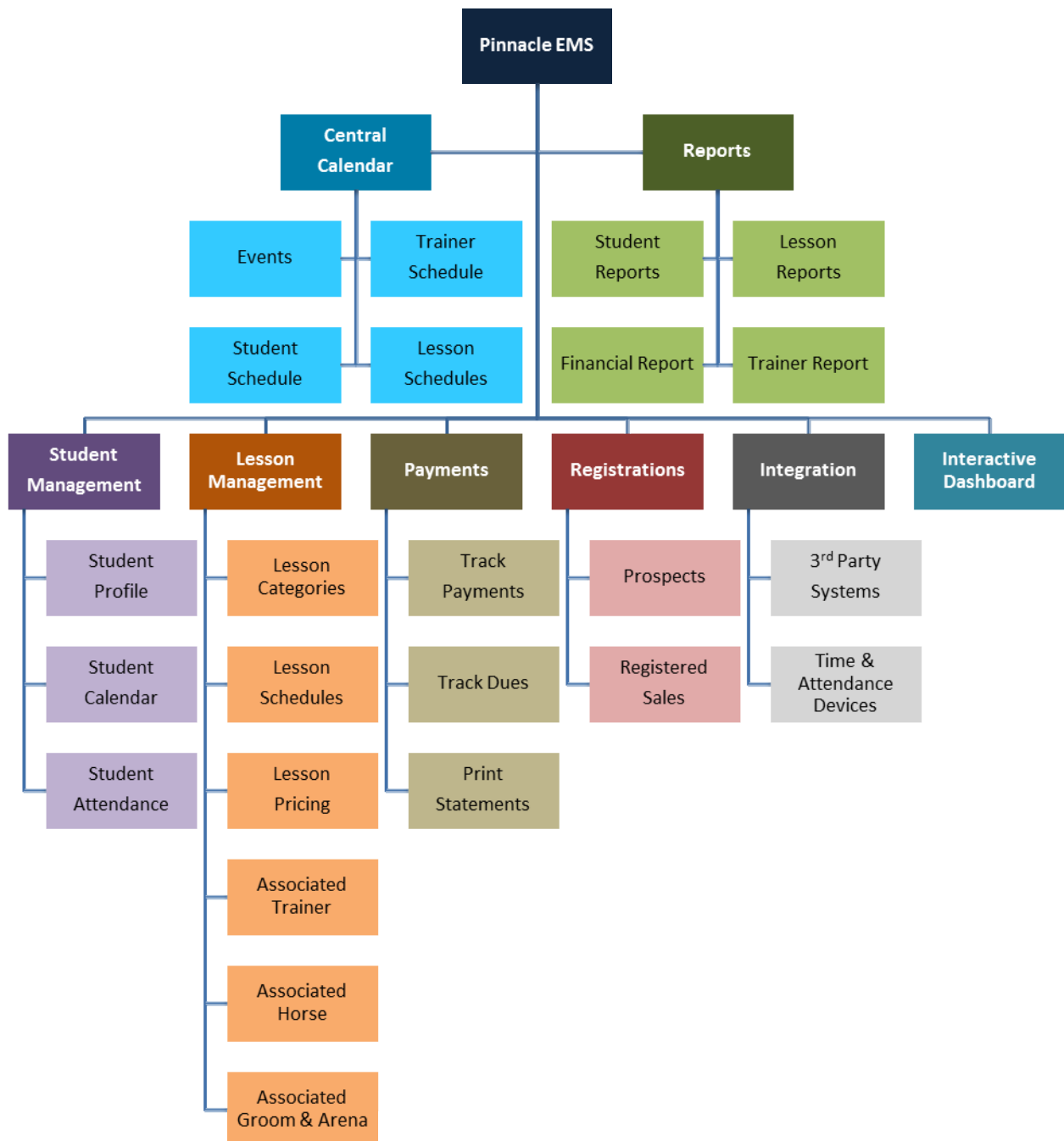




Pinnacle[®] Equine Management System (EMS) - Overview

Pinnacle EMS enables your riding center to schedule, track and report on training for individuals or groups. It reduces the time, resources and costs associated with maintaining your riding center. Pinnacle is capable to offer an in-depth and comprehensive equine management system with solid administration, competency management and multilingual capabilities. Pinnacle is web-based, powerful, flexible, and scalable system. It offers training solution for instructor-led training and blended learning. It also assist other departments such as finance, administration and maintenance. It can further be customized as per your riding center training and development needs.



Key Features

FEATURES

KEY FEATURES	DESCRIPTION
Student Management	<ul style="list-style-type: none">• Simple registration process seamlessly allows staff to capture customer information in the system towards any available lesson.• Every registered student has a separate calendar and schedule for their registered lessons.• After the lesson completion student will be able to renew their lessons or can enroll for another lesson if required. System will track the history of each student registered in the system
Lesson Management	<ul style="list-style-type: none">• Lesson can be created in the system with different levels.• Each course created in the system supports;<ul style="list-style-type: none">⇒ Multiple levels.⇒ Multiple types• System checks the availability of "Trainer", "Horse", "Arena" and "Groom" at the time of creating a Lesson schedule. Based on the lesson schedules, system generates "sessions".• System allows the authorized staff to modify date/time of a particular session if required. This will automatically update the calendar of horse, arena, trainer, groom and student.• System tracks the attendance of the student for every registered lesson.
Calendar Management	<ul style="list-style-type: none">• System supports a central calendar which manages the schedules of following;<ul style="list-style-type: none">⇒ Lesson⇒ Trainer⇒ Student⇒ Horse⇒ Arena⇒ Groom• For every booking registered in the system will have associated resources. Lessons can be created for a day or can be created on the recurrence pattern such as daily, weekly, monthly basis.
Capacity Planning	<ul style="list-style-type: none">• System also manages and tracks the capacity of following;<ul style="list-style-type: none">⇒ Horse⇒ Arena⇒ Trainer• Every horse, arena or trainer has certain capacity to conduct lessons. System allows user to plan their schedule based on their individual capacity.
Payments & Receipts	<ul style="list-style-type: none">• System tracks the payments and shows the pending receivables or due report.• System will be able to print due statements for the corporate clients or individual.
Integration & Mobility	<ul style="list-style-type: none">• System is open to integrate with third-party systems and databases.• System is scalable enough to be responsive on mobile device if required.• System is open to integrate with online payment gateways, social media sites and other websites



Gulf Business Solutions (GBS)

An enterprise of One World United General Trading & Cont. Co. W.L.L.

112, 34th Floor, Panasonic Tower, Fahad Al-Salem St., Kuwait City - Kuwait. Tel: 22209168 | Mobile: 60067986

Email: sales@gbskw.com | Web: www.gbskw.com